

---

# WSUS Easy Reporter Installation and Configuration Guide

## Installation Requirements

- Computer running Windows 2003/2000 Server with Microsoft Windows Server Update Services (WSUS) installed.
- Microsoft .NET Framework version 2.0 installed on WSUS server.

## Installation Steps

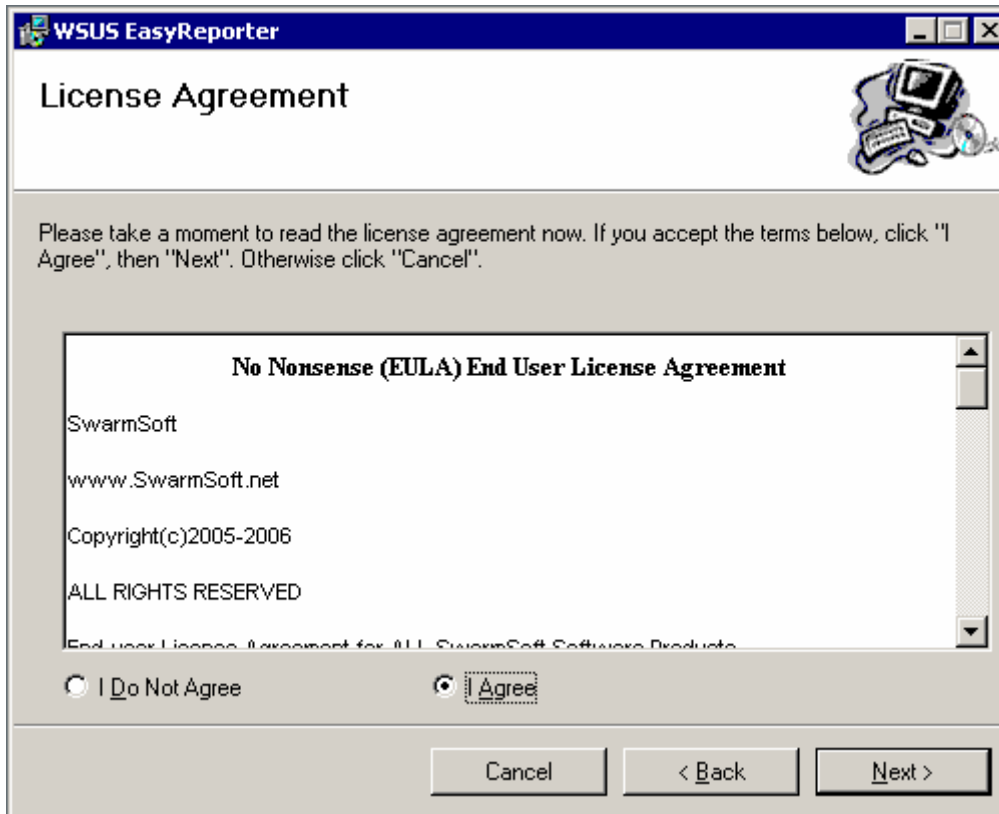
1. Install software by extracting the files in the WSUSEasyReporter.zip file.

This file can be obtained by going to <http://www.swarmsoft.net/support/> and clicking on WSUS EasyReporter Premium Support forum link. Clicking on the Software Download post link will open the page where all versions of the software can be downloaded. (The most recent version will be down at the end of the post.)

2. After extracting the files navigate to the folder where the files were extracted and double-click on the setup.exe file.
3. Click 'Next' on the welcome screen.



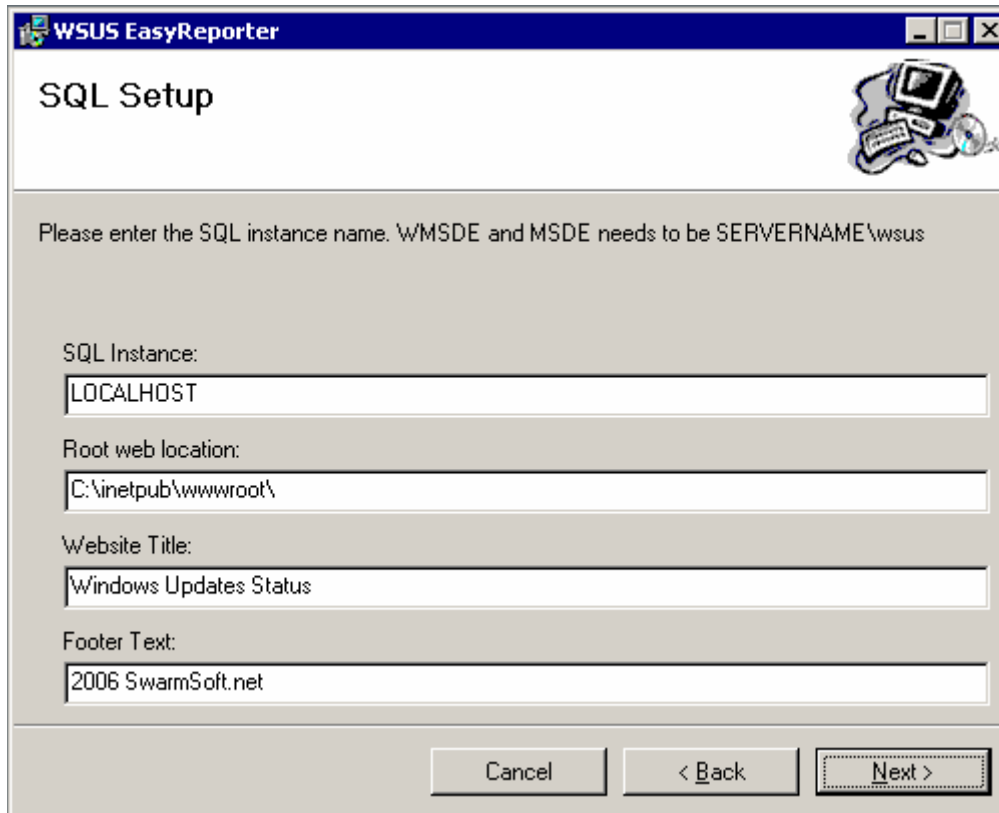
4. Agree to the End User License Agreement and click 'Next'.



5. In the SQL setup dialog enter the SQL server instance for WSUS.

- If WSUS database was installed with the default WMSDE database then enter **LOCALHOST\WSUS** in the SQL Instance textbox.
- If WSUS database was installed on a different SQL server then enter the name of the SQL server in the SQL Instance textbox.

Enter the default Root web location for WSUS. Enter a website title and footer for the WSUS EasyReporter website. Click 'Next'.



WSUS EasyReporter

### SQL Setup

Please enter the SQL instance name. WMSDE and MSDE needs to be SERVERNAME\wsus

SQL Instance:  
LOCALHOST

Root web location:  
C:\inetpub\wwwroot\

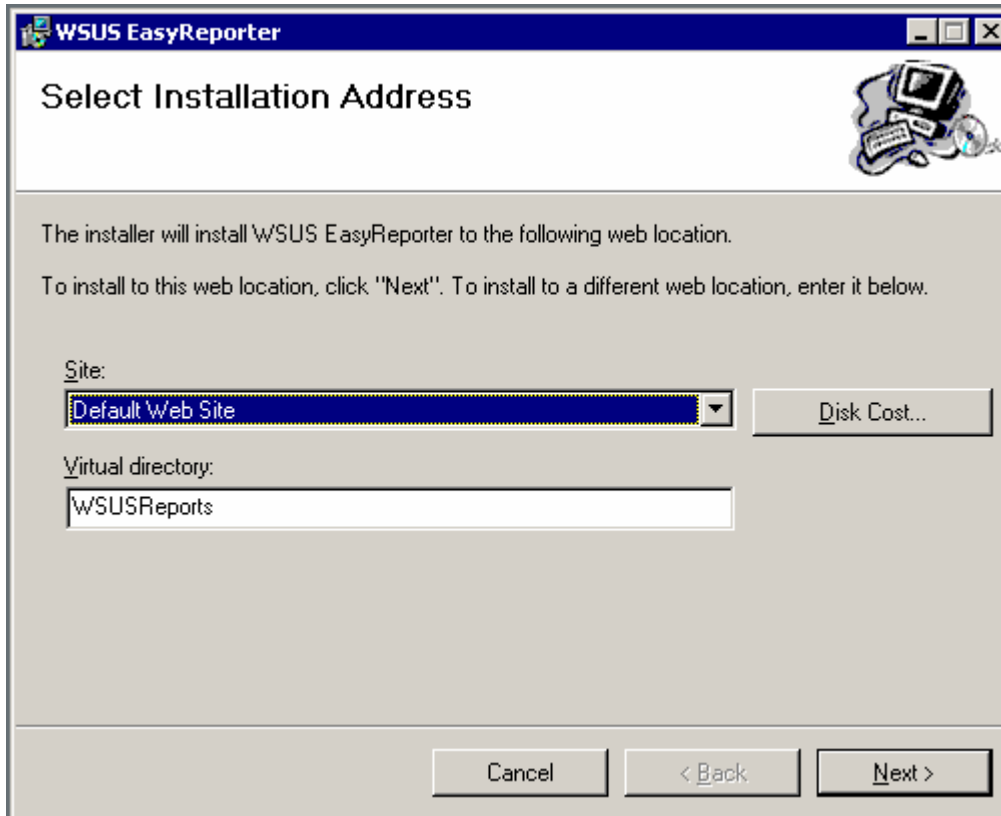
Website Title:  
Windows Updates Status

Footer Text:  
2006 SwarmSoft.net

Cancel < Back Next >

6. In the Select Installation Address dialog choose the site that WSUS is installed in. (Default is Default Web Site)

\* A new website can be created beforehand and then chosen. The website will have to have host headers set and your DNS server should have an alias (CNAME) created for the site.



Enter a virtual directory name. This is the name that you will connect to in the address bar of your browser. (i.e. <http://LOCALHOST/WSUSReports>) Click 'Next'.

7. Click 'Next' to start the installation.
8. After the setup is finished read the readme and click 'Next' then Close.

## Configuration

If the options set in the installation are correct there should be no configuration needed to run the WSUS EasyReporter website. To connect to the website open a web browser (IE, Firefox, Opera, etc...) and type <http://WSUSSERVERNAME/VIRTUALDIRECTORY> (Replace WSUSSERVERNAME with the actual WSUS server name and replace VIRTUALDIRECTORY with the virtual directory you specified in installation step 6.)

If changes in the database server, website title or website footer are needed after the install then go to the WSUS server and open the web.config file in a text editor (the location of the web.config file will be the same as the Web Root Location from install step 5 + the virtual directory folder from install step 6) and change the following lines:

```
<add key="LegalNotice" value="2006 SwarmSoft"/>  
<add key="Title" value="Windows Updates Status"/>  
<add key="WSUSServer" value="LOCALHOST"/>
```

The text after the value=" can be changed. The key=" can not be changed or it will cause errors on the website.

The changes should occur the next time the WSUS EasyReporter website is refreshed.

### **Troubleshooting**

If the website experiences errors or does not come up after following the steps in the installation and configuration please visit

<http://www.swarmsoft.net/support/> and go to the WSUS EasyReporter Premium Support forum for questions and answers.

These instructions are for WSUS EasyReporter version 1.0.1 and above.

Nov. 2006